

Technical Data Sheet

Traxite Colourfine Decorative Coating System



DESCRIPTION:

Traxite Colourfine is an in-situ, trowel applied, attractive, coloured natural quartz stone floor finish. Once applied and cured the Quartzite in selected design and colour becomes an integral part of the building structure.

Traxite Colourfine is a virtually seamless, liquid applied floor topping system and is not installed in tile form.

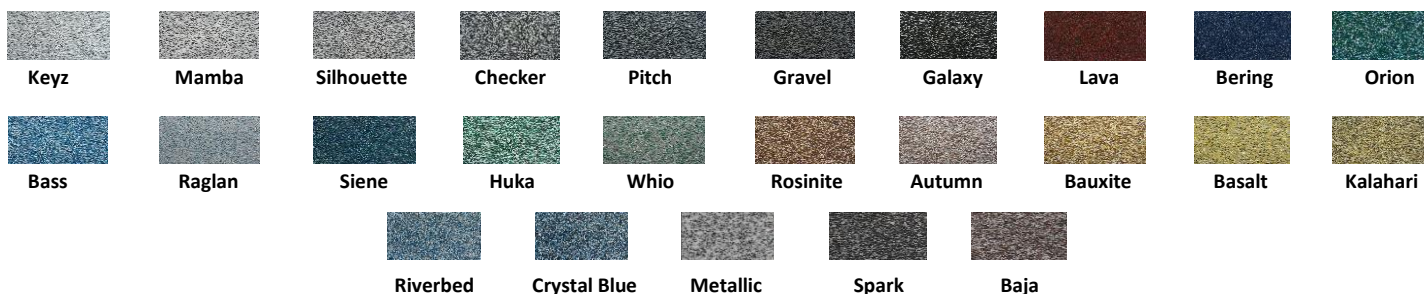
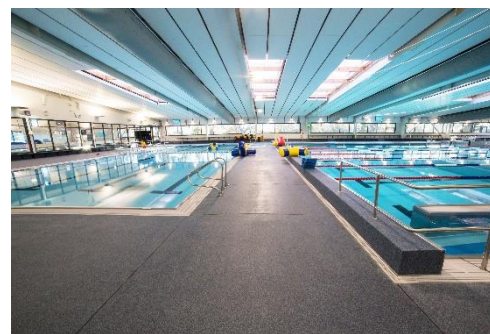
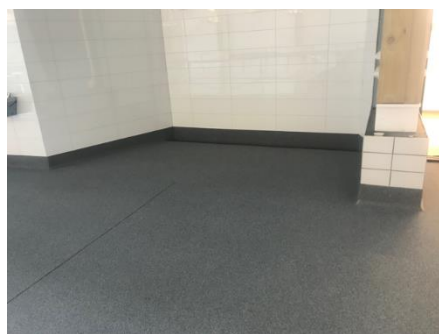
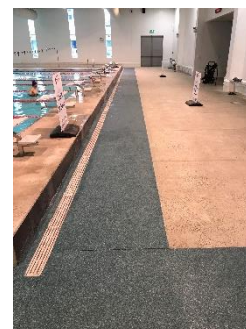
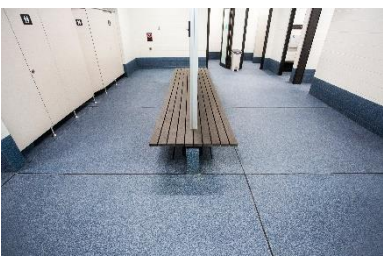
Traxite Colourfine is dimensionally stable and as such control joints are only required where appropriate for the substrate.

TYPICAL FEATURES | BENEFITS:



- Epoxy based resin gives excellent concrete penetration and adhesion.
- Very good abrasion and scuff resistance.
- Tolerant of application to a slightly damp surface.
- Excellent adhesion to properly prepared substrates.
- Easily cleaned.
- Excellent slip resistance.
- Cured Film is non-toxic.
- Not moisture permeable.
- Colour: Available in a wide range of colours.
- Attractive Surface Finish
- Clear coat finish options - medium gloss & high gloss option

**** Use Rapidcote Clear Finish Option for Fast Return to Service ****



COLOURS:

A range of colours may be obtained by various colour blends

The colours above are suggestions only and is not limited to a range of "pre-blended" colours

To view colours in larger format: [Technical Data \(allnexconstruction.com\)](http://Technical Data (allnexconstruction.com))

PERFORMANCE DATA:

Minimum Thickness	3mm
Minimum Application Temperature: Air	+10°C
Maximum Application Relative Humidity: Air	85%
In-service temperatures: on fully cured system	4mm -10 to +60°C
Chemical Resistance	Resistant to chemical spillage –cured 7 days at 25°C. Refer Chemical resistance chart
Critical Radiant Flux:	5.1 K/m ²
Adhesion to correctly prepared substrate	1.5MPa minimum
Moisture absorption: ASTM D570-63	0.04%
Weight per m ²	4mm - 8.8 kgs
Slip resistance	R11 – Co-efficient of Friction 0.63

RECOMMENDED USES:

- Ablution areas.
- Bars and Restaurants
- Fire Stations
- Shops
- Aquatic Centres
- Entry Foyers
- Sports Changing Facilities
- Showrooms

LIMITATIONS:

- Application below +10°C.
- Application to green (uncured) concrete. Allow 28 days.
** Will tolerate damp concrete**
- Application to unsound substrates.
- Application to incorrectly prepared surface.

HEALTH & SAFETY: Refer safety data sheets (SDS).

- Avoid skin contact.
- Provide adequate ventilation.
- Avoid breathing vapour or fumes.
- Wear safety equipment including clothing and breathing apparatus.

SUBSTRATE:

All substrates shall be stable and solid.

Concrete: New

Shall have a surface which has been mechanically trowelled to AS3610:1995 U3/NZ/3114:1987U3 finish.

Concrete shall be cured for a minimum of 28 days prior to the installation of the Traxite Colourfine.

Minimum Compressive Strength at 28 days cure: 25 MPa. (25 N/mm²)

The moisture content shall be less than: 75% RH.

Have a suitable vapour resistant membrane beneath the concrete.

Concrete: Old

Minimum Compressive Strength: 25 MPa. (25 N/mm²)

The moisture content shall be less than: 75% RH.

Have a suitable vapour resistant membrane beneath the concrete.

******Note******

If the substrate is an above grade slab and waterproofing is required to comply with NZBC E3, consult with allnex Construction Products.

QUALITY ASSURANCE:

The allnex Licensed Contractor shall ensure all QA checks have been undertaken prior to the installation process and subsequently during the installation process. The completed documentation must be made available to allnex and the client/clients authorised personnel.

The product is to be installed within the required control range to ensure a fully cured hard wearing monolithic floor topping system.

Information to be recorded daily is:

- Concrete sub-base or prefill mix.
- Material batch numbers used.
- Sequence of mixing, ratios and quantities and formula.
- Substrate moisture content & Substrate temperature.
- Ambient temperature | Ambient relative humidity.
- Daily detail of licenced contractors on-site.

PRODUCT PROPERTIES:

Pot Life: ~ Supascreed Primer ~ Surecote 500 System Resin Hardener ~ Revathane ~ Rapidcote Clear	+20°C ~75%RH +20°C ~75%RH +20°C ~75%RH +20°C ~50%RH	1 hour 1 hour 1 hour 6 hours
Touch Dry: ~ Supascreed Primer ~ Surecote 500 System Resin Hardener ~ Revathane ~ Rapidcote Clear	+20°C ~75%RH +20°C ~75%RH +20°C ~75%RH +20°C ~50%RH	1 hour 6 hours 6 hours 30 minutes
Hard Dry: ~ Supascreed Primer ~ Surecote System Resin / Hardener ~ Revathane ~ Rapidcote Clear	+20°C ~75%RH +20°C ~75%RH +20°C ~50%RH +20°C ~50%RH	24-48 hours 12+ hours 24+ hours 4 hours
Recoat time: ~ Revathane ~ Minimum ~ Revathane ~ Maximum ~ Rapidcote Clear ~ Minimum ~ Rapidcote Clear ~ Maximum	+20°C ~75%RH +20°C ~75%RH +20°C ~50%RH +20°C ~50%RH	6 hours 18 hours After this time: Refer: Re-glaze technical literature 1 hour 48 hours After this time: Refer: technical literature
Full Cure: ~ Revathane ~ Rapidcote Clear	+20°C ~75%RH +20°C ~50%RH	7 days 24 hours
Thinning: ~ Supascreed Primer ~ Surecote System Resin / Hardener ~ Revathane ~ Rapidcote Clear	Clean Potable Water Not recommended Not recommended Not recommended	
Clean Up	Solvent HA	
Dangerous Good Class ~ Supascreed Primer ~ Surecote System 500 Resin ~ Surecote System 500 Hardener ~ Revathane ~ Rapidcote Clear Resin ~ Rapidcote Clear Hardener	Hazard Class 9 Packing Group III Hazard Class 9 Packing Group III Hazard Class 8 Packing Group I Hazard Class 3 Packing Group III Hazard Class 3 Packing Group III Hazard Class 3 Packing Group III	
Packaging ~ Supascreed Primer ~ Surecote System 500 Resin ~ Surecote System 500 Hardener ~ Revathane ~ Rapidcote Clear Resin ~ Rapidcote Clear Hardener	6.4 kg Kit 20 kg Polypail 200 kg Metal Drums 20 kg Polypail 20 litre Metal Pail 9.8 kg Metal Pail 1 kg Metal Tin	
Shelf life	12 months from date of manufacture. (After this period consult with allnex)	

SURFACE PREPARATION:**Concrete:**

Prepare concrete by mechanical abrasion method to:- **CSP4-5**. (Concrete Surface Profile Scale - International Concrete Repair Institute)

See technical literature: [Concrete-Surface-Preperation \(2\).pdf](#)

Remove all concrete curing agents, contaminants and any other material likely to affect the adhesion of the Traxite Colourfine System.

Do not apply over existing coating without checking compatibility, Over-coating is not likely to be successful without strong, coarse abrasion.

Prefill any large divots with allnex K125 or Epoxy Fairing Cream and diamond grind to remove any highpoints or contaminants.

COVES:

Where required:

See technical literature – Details: [Typical-Resin-Flooring-Details \(1\).pdf](#)

Install Coves:

- Small Pencil Coves: Surecote System 500 | Supascreed
- Other Coves: Surecote System 500 | Supascreed

Install allnex cove upper termination metal strips: **5.2mm or 9.2mm rebated strip**.

Use a rebated wall cut if the coving strip cannot be used.

Install fibreglass CSM cloth in floor/wall internal junctions. (Required on surfaces other than Concrete upstands)

STZ PREFILL: (for adding falls, slope modification and floor angles)

Where required:

STZ prefill system types: See STZ technical literature: [Technical Data \(allnexconstruction.com\)](http://allnexconstruction.com)

The falls must be specified pre-tender. (Traxite Colourfine is a medium build floor coating and prefill may involve significant extra materials).

The quantities of materials required to raise the floor height at wall perimeters is often underestimated. To do this may involve significant extra costs and should be discussed and agreed. It is a very common for STZ prefill system to be used under Traxite Colourfine to create falls to drains and other filling applications. Normally for new work falls are laid in the concrete and fall to drains. However, in refurbishment the drains and falls are incorrect. Sometimes new drains are installed. The Prefill create falls of at least 1: 50 to ensure no ponding water. (1:100 will fall but will have standing water in places).

INSTALLATION:**Primer:**

Use Supascreed Primer (**Solvent Free**) at 5-6m²/Lt. Apply evenly. Allow to fully dry before application of the Surecote System 500 Basecoat.

Alternatively, dilute Surecote System 500 with Methylated Spirits (10 parts to 1 part and use that as a primer).

****Note****

Whilst primer is still wet broadcast sparingly the design aggregate into the wet surface. This will act as the gauge for the application of the Surecote System 500 Basecoat.

Allow to fully dry before application of the Surecote System 500 Basecoat.

SURECOTE 500 MIXING:**Mix Ratio: By weight or volume**

Resin - Part A	2 parts
Hardener - Part B	1 part

Mixing:

Measure correct quantities of Surecote System 500 Resin (Part A) and Surecote System 500 Hardener (Part B) to a suitable container. Power mix at low speed (approximately 300rpm) for 2 minutes ensuring both compounds are homogeneously blended, and the colour is uniform. Scrape the pail sides with a long broad-knife and then mix again Mix slowly to avoid air entrapment.

Note: ensure no unmixed materials remain on the sides, rims or lips of the containers.

APPLICATION METHOD:

Roller | Brush | Trowel.

The Surecote System 500 must be applied in such a manner to achieve a minimum 1mm thickness. This is achieved by using the design gauge aggregate in the primer coat as the guide.

Ensure all finished edges of the Traxite Colourfine are supported to avoid damage. Traxite Colourfine may be applied to skirting's, coves and upstands if required with the use of specially formed trowels.

Floors must be protected during cove/skirting installation.

TOPCOATS:**Option #1**

Revathane Glaze Topcoats

1st Coat at 2m²/litre

2nd Coat at 4m²/litre

Option #2

Rapidcote Glaze Topcoats – Fast Cure – Rapid return to service

1st Coat at 2m²/litre

2nd Coat at 4m²/litre

****Caution****

Ensure glaze coats have been applied in accordance with the Relevant Technical Literature

JOINTS:

All concrete control and construction joints should be carried through the Traxite Colourfine using allnex K130 Epoxy or PU40 sealant.

MAINTENANCE:

Repairs:

Chemically clean.

Mechanically abrade surface.

Repair any divots with allnex K125 or Fairing Cream.

Apply Traxite Colourfine as per "Installation instructions".

CLEANING:

Mopping is **not** adequate for removal of dirt and grime from the surface profile of the Traxite Colourfine. We therefore recommend the use of a soft bristled broom in conjunction with the cleaning solution. Or on larger areas a mechanical scrubbing machine.

**** Note****

Ensure all detergent materials, dirt etc. is thoroughly rinsed from the surface following cleaning.

FIXING OF PLANT AND MACHINERY:

Mechanical fixings into the substrate must be resin fixed. This is to ensure that there is no water migration into the substrate.

Conventional expanding plugs, screws or anchors are not an acceptable fixing method.

CHEMICAL RESISTANCE:

Chemical spillages should be cleaned up immediately.

Date: March 2021

Replaces: Dec 2019

Allnex Construction products, a Division of Allnex New Zealand Ltd

Auckland - 14 Industry Road, Penrose, phone: 09-583-6544.

Hamilton - 18 Somerset Street, Frankton, phone: 07-847-8658.

Wellington - Unit 9A, 4 Glover Street, Ngauranga Gorge, phone: 04-240-0305.

Christchurch - 112 Carlyle Street, Sydenham, phone: 03-366-6802.

Customer Service: 0508-882-288 cs.constructionnz@allnex.com

www.allnexconstruction.com

The logo for Allnex, featuring the word "allnex" in a bold, lowercase, sans-serif font. The letters "a", "l", "l", "n", "e", and "x" are white, while the "i" is colored with a gradient from purple to green. A horizontal line with a similar color gradient is positioned above the letters.

DISCLAIMER: This information appearing in this Document (**Details**) concerning the product which is the subject of the Document (**Product**) is either based on present technical knowledge and tests done by allnex or tests done by, and data supplied from third parties including you, the customer. Since the actual use by you and by others of the Product is beyond the control of allnex, no warranty or representation, express or implied is made by allnex regarding the suitability for such use, nor does allnex accept any liability arising out of the use by you of other products or materials, whether third party or not, that may be referred to in this Document. allnex recommends that you carry out your own tests as to the suitability of the Product for your purpose, regarding which you accept full responsibility. In addition, if any of the Details appearing in the Document are based upon tests done by, and/or data supplied by any third party, allnex provides no warranties or representations in connection with those Details and you, the customer waives any right you may have against allnex in connection with the accuracy, completeness or otherwise of the Details. The information in this Document is not to be construed as absolutely complete or accurate since additional information may be necessary or desirable when particular or exceptional conditions or circumstances exist or because of applicable laws or government regulations affecting use of the Product. allnex does not provide any warranty or representation to you that the Product does not infringe the intellectual property rights of any third party. All orders accepted shall be subject to the standard conditions of sale of allnex which are on the back of our invoice. In accepting the Product, you, the customer acknowledge and agree: a.) The Product is or may be of a hazardous nature and that you, the customer, are responsible for the disposal of the container housing the Product in accordance with the requirements and regulations of the relevant supervising government. b.) The Product has a limited shelf life and must be stored strictly in accordance with the guidelines and specifications related to it. c.) Where the Details relate to Product tested by allnex, those Details are indicative only, regarding which there may be batch to batch variation. d.) allnex gives no warranty or representation as to the applicability for the particular use by you, the customer, of the Product and you the customer shall be responsible for ensuring that the Product is fit for your intended use. e.) allnex's liability for breach of any term, condition, guarantee or warranty (express or implied and concerning the information in this Document or the Product more generally) including any liability for direct or indirect consequential loss (including indirect loss of profits), is limited to the maximum extent permitted by law and, at allnex's election, to either replacing or repairing the goods or paying the cost of replacing or repairing the goods, or in the case of services, supplying the services again.