

Description

A dimpled polypropylene sheet with an adhered filter fabric for vertical and horizontal protection and drainage of waterproofing membranes such as Allnex Bituthene or Soprema membranes.

Application areas:

- Protection of Tanking: DPM or below grade tanking (walls buried below ground).eg Bituthene 3000 prevents water from entering the wall or building structure from the ground.
- Protection and drainage of under horizontal roof & floor slabs
- Protecting waterproofing membranes on buried structures from fill damage and providing drainage. Eg Jardin System
- Against masonry, precast or poured in-situ concrete, Polystyrene faced blocks

Properties

Property	Result
Material	HDPE Star drain V
Draining / filter fabric	Needle punched polypropylene
Colour	Black, fabric is grey
Compression	320 KN/m ² 32t/m ²
Tissue weight	110g/m ²
Stud height	7mm
Studs per m ²	1860 approx
Air volume between studs	5 L/m ² approx.
Drainage capacity	4.6 L/m ²
Chemical resistance	Resistant to most chemicals, non-polluting
Combustion class	F-DM 15/03/05
Roll size m	2 x 20m
Rolls per pallet	6
Dimensional Tolerance	+/- 4%
Thermal stability	Stable -40 to +80c protect from UV

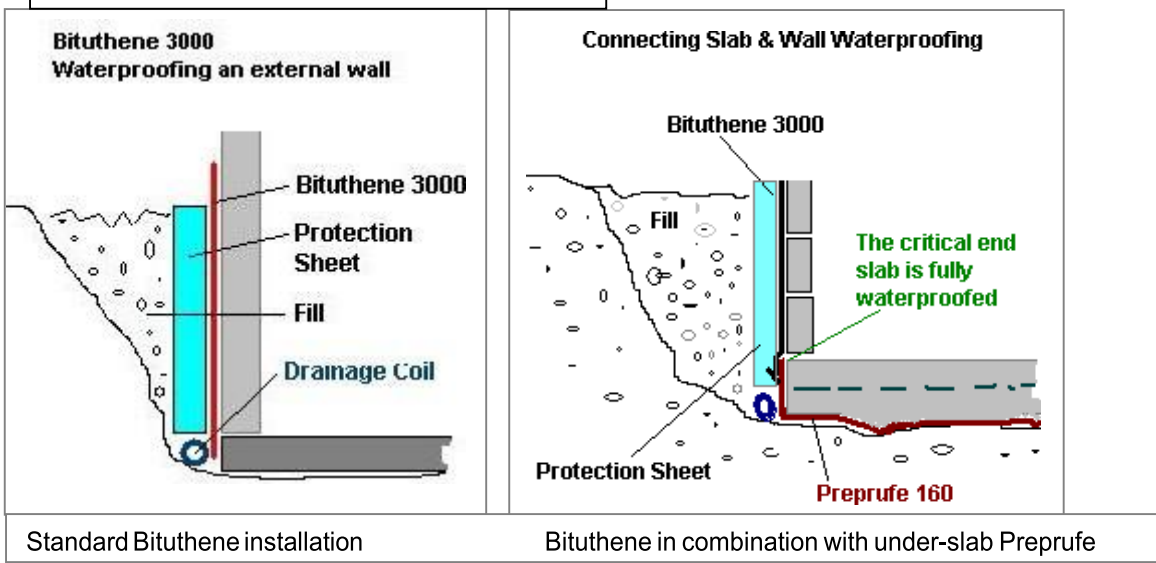
Installation

- Install waterproofing membranes eg Bituthene 3000 or multiple layers of Allnex Jardin system for buried structures.
- Seal all penetrations using LM 3000 - Install protection board, **Drainage Sheet NPX**, prior to top-filling or backfilling. Hold in place with mastic or sandbag on horizontals. Back fill as required.
- Complete top edge with hammered down tight Naplok as in image on page 3. This also functions as the Bituthene termination strip.
- Protect exposed membrane from UV using Bituthene Solarshield, Soprema Soprasolin or other suitable protection.

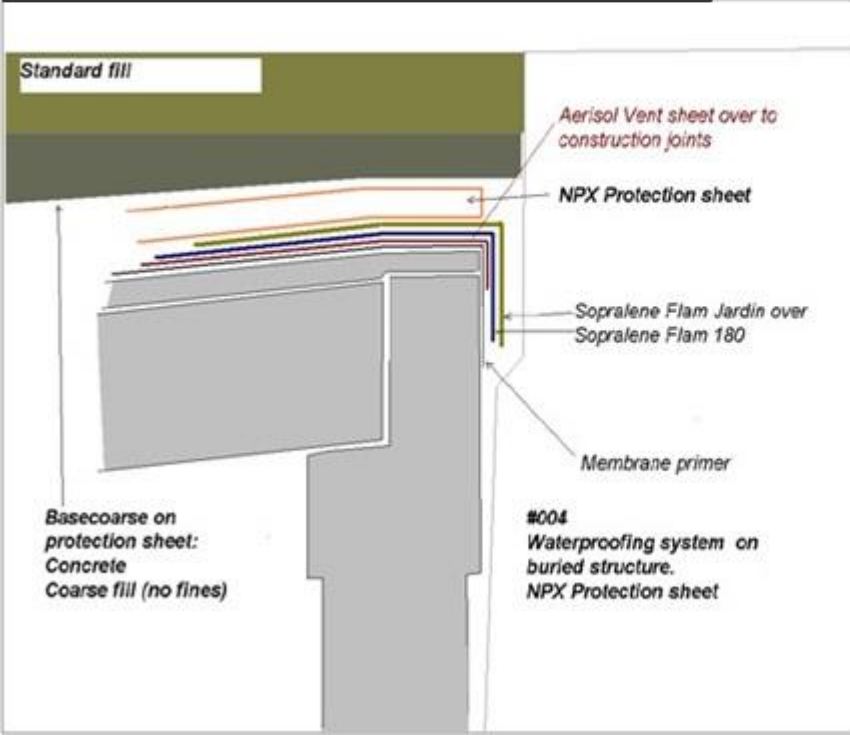
Note the following:

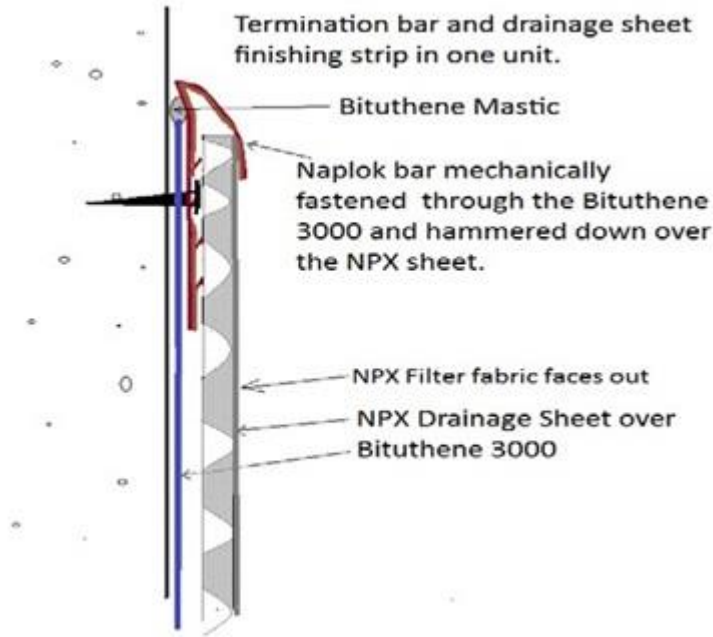
- Allnex recommend Licensed Allnex Contractors who are members of The Allnex Contractors Federation; lists are provided from Allnex.
- If a concrete wet mix is being applied over the NPX as solid protection, consider using Polyethylene sheet as a slip layer and to prevent wet slurry clogging the NPX cells.
- In rugged environments, with rough fill, consider overlapping the NPX by 150mm to prevent coarse aggregate entering via the sheet gap and damaging the waterproofing.
- Ensure the NPX remains stable during the fill process.
- Consider the construction traffic on The NPX during back filling.

NPX as vertical protection sheet.

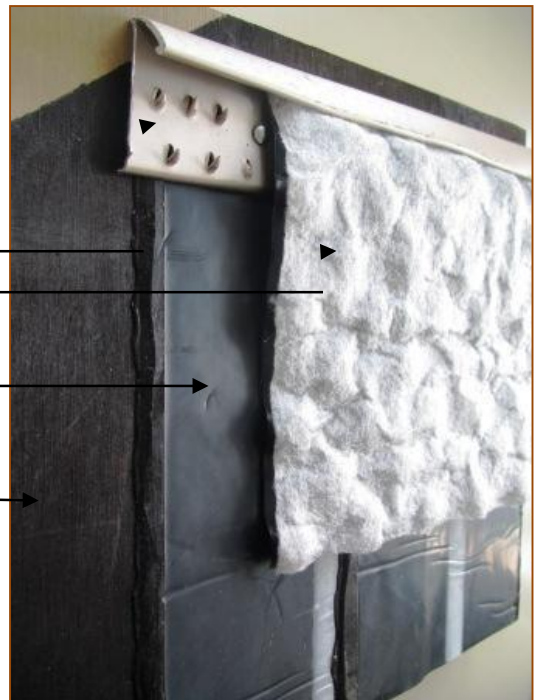


Standard Buried Structure detail





Naplok Termination Bar
 NPX Drainage
 Bituthene 3000
 Primer



Date: July 2018
 Replaces May 2016

Allnex Construction Products, a Division of Allnex New Zealand Ltd

Auckland - 14 Industry Road Penrose phone: 095836544. Hamilton - 18 Somerset Street Frankton phone: 07-847-8658
 Wellington - 19A Jamaica Drive Grenada North phone: 04-240-0305. Christchurch - 112 Carlyle Street Sydenham phone: 03-366-6802
 Customer Service: 0508-882-288 cs.constructionnz@allnex.com
www.allnexconstruction.com



DISCLAIMER: This information appearing in this Document (**Details**) concerning the product which is the subject of the Document (**Product**) is either based on present technical knowledge and tests done by allnex or tests done by, and data supplied from third parties including you, the customer. Since the actual use by you and by others of the Product is beyond the control of allnex, no warranty or representation, express or implied is made by allnex regarding the suitability for such use, nor does allnex accept any liability arising out of the use by you of other products or materials, whether third party or not, that may be referred to in this Document. allnex recommends that you carry out your own tests as to the suitability of the Product for your purpose, regarding which you accept full responsibility. In addition, if any of the Details appearing in the Document are based upon tests done by, and/or data supplied by any third party, allnex provides no warranties or representations in connection with those Details and you, the customer waives any right you may have against allnex in connection with the accuracy, completeness or otherwise of the Details. The information in this Document is not to be construed as absolutely complete or accurate since additional information may be necessary or desirable when particular or exceptional conditions or circumstances exist or because of applicable laws or government regulations affecting use of the Product. allnex does not provide any warranty or representation to you that the Product does not infringe the intellectual property rights of any third party. All orders accepted shall be subject to the standard conditions of sale of allnex which are on the back of our invoice. In accepting the Product you, the customer acknowledge and agree: **a.)** The Product is or may be of a hazardous nature and that you, the customer, are responsible for the disposal of the container housing the Product in accordance with the requirements and regulations of the relevant supervising government. **b.)** The Product has a limited shelf life and must be stored strictly in accordance with the guidelines and specifications related to it. **c.)** Where the Details relate to Product tested by allnex, those Details are indicative only, regarding which there may be batch to batch variation. **d.)** allnex gives no warranty or representation as to the applicability for the particular use by you, the customer, of the Product and you the customer shall be responsible for ensuring that the Product is fit for your intended use. **e.)** allnex's liability for breach of any term, condition, guarantee or warranty (express or implied and concerning the information in this Document or the Product more generally) including any liability for direct or indirect consequential loss (including indirect loss of profits), is limited to the maximum extent permitted by law and, at allnex's election, to either replacing or repairing the goods or paying the cost of replacing or repairing the goods, or in the case of services, supplying the services again.