

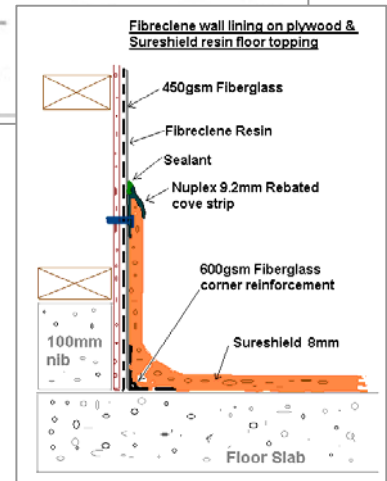
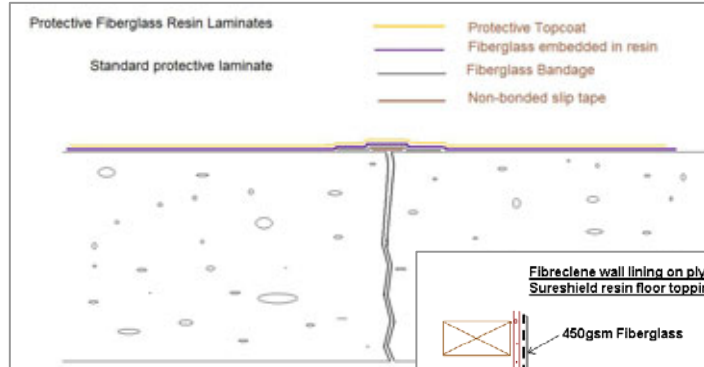
Date July 2014
Replaces Jan 2010

Prolam Protective Laminate Systems

For the protection of walls and surfaces in harsh environments

This sheet summarises a range of systems that are used specifically to provide long term durable systems for primary industry. They are characterized by:

- Very High Film Build 1- 1.8
- mm
- Reinforced with fiberglass sheets to form a laminate
- High bond strength to concrete and steel
- Heat resistance
- Chemical resistance
- High resistance to cracking
- Abrasion resistance



SUGGESTED USES:

- Food storage and processing plant.
- Chemical storage and bund areas.
- Sewage & wastewater facilities for liquid protection and gas-phase (Hydrogen Sulphide) protection.
- Brine and chemical tanks.
- Chemical processing areas.
- Pharmaceutical filling and processing areas.
- Hygiene areas.

System	Components	Film Thickness (mm)	Type	Features
Situclad E Also known as Situclad WCS	Aquaguard 101. Fibreglass mat. Aquacolour & Surfacing tissue.	1	Reinforced waterbased epoxy with gloss waterbased epoxy topcoat & tissue for smoothness.	All waterbased. Waterproofing and hygienic wall lining. Gloss
Situclad EWS	Aquaguard 101. Fibreglass chopped mat.	1	Reinforced waterbased epoxy	Waterproofing laminate
Fibreclene	Fibreclene white, Fibreglass mat, surfacing tissue	1.5	Reinforced polyester resin with topcoat & tissue for smoothness.	Hygienic wall lining. Attractive white, satin finish.
Situclad VE	Situclad VE clear, Fibreglass mat, surfacing tissue. #1	1.5 1.8 with GF	Reinforced vinyl ester resin with topcoat & tissue for smoothness.	Hygienic, chemically durable wall lining.
Situclad EHD	Supascreed epoxy & Fibreglass chopped mat.	1.5	Reinforced 100% epoxy	Reinforcing epoxy laminate
Situclad ECR	Surecote 500 AR & Fibreglass chopped mat.	1.5	Reinforced 100% durable epoxy	Reinforcing chem. Resistant epoxy laminate

#1 - plus Situclad VE Glass flake if required for extra chemical resistance.

These systems are shown in summary for comparison.

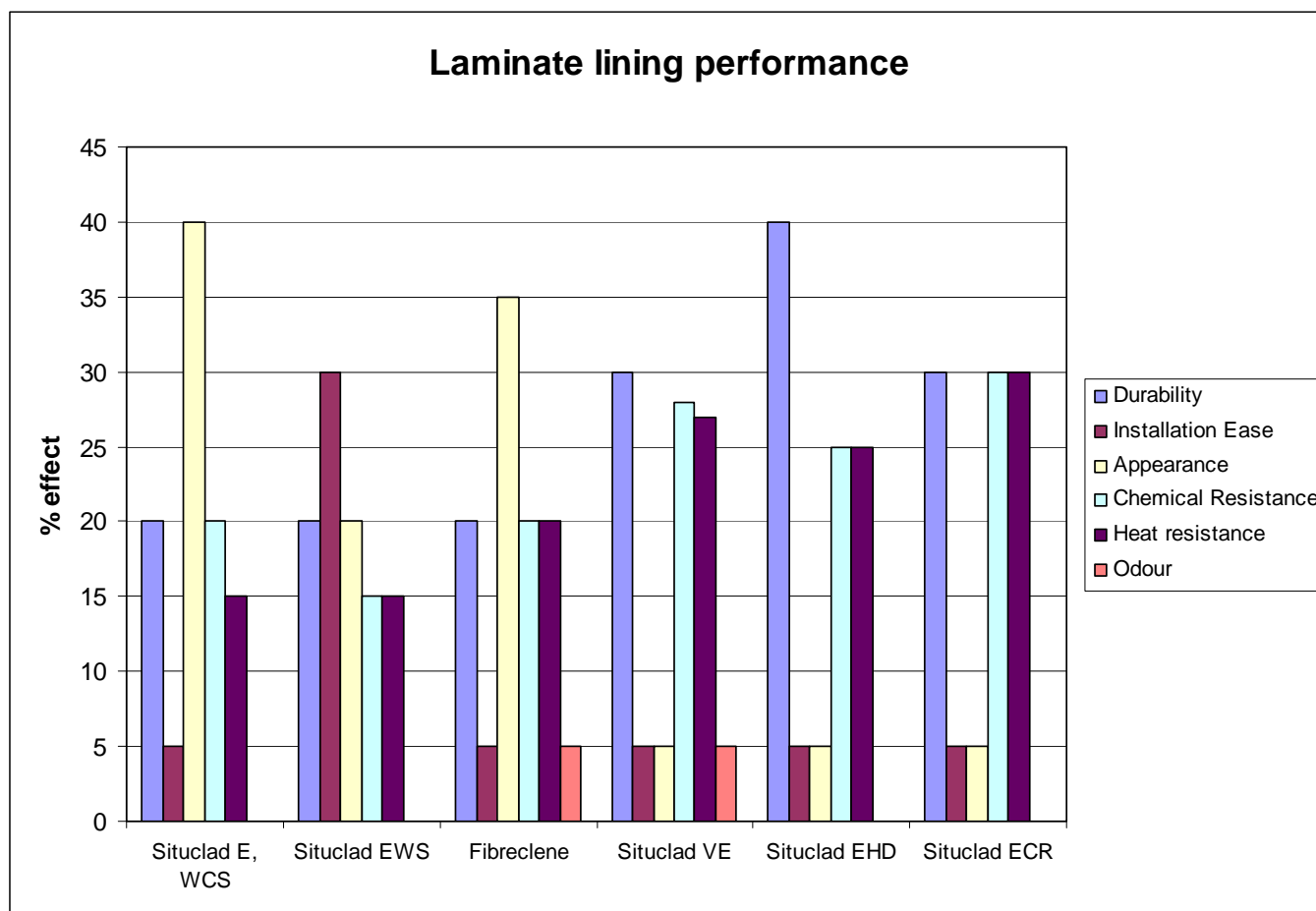
Refer to the individual system datasheets for performance details and then to individual product datasheets for application details.

Protective Coatings: Nuplex also supply a wide range of durable coatings. These un-reinforced systems are more economical and easier to apply to apply. However they are less durable than laminates and do not self-support.

Always refer to separate **PROFIN summary** documents and individual datasheets.

System	Components	Features	Applications	Substrates
Situclad E Also known as Situclad WCS	Aquaguard 101. Fibreglass mat. Aquacolour & Surfacing tissue.	All waterbased. Waterproofing and hygienic wall lining.	Food processing Interior walls & floors. Hygiene rooms, walls	Concrete, Masonry, Precast, Ply, GIB, villaboard. etc
Situclad EWS	Aquaguard 101. Fibreglass chopped mat.	Waterproofing laminare	Damp concrete. Interior walls & floors. Waterproofing	
Fibreclene	Fibreclene white, Fibreglass mat, surfacing tissue	Hygienic wall lining. Attractive white, satin finish.	Food processing Interior walls & floors. Hygiene rooms, walls	Concrete, plywood, compressed sheet, Masonry, Precast
Situclad VE	Situclad VE clear, Fibreglass mat, surfacing tissue. Optional Glass flake topcoat for high chemical resistance	Hygienic, chemically durable wall lining.	Food processing Interior walls & floors. Hygiene rooms, walls. Areas of continuous heat & chemical exposure. #2	Concrete, Masonry, Precast
Situclad EHD	Supascreed epoxy & Fibreglass chopped mat.	Reinforcing epoxy laminare	Reinforcing fiberglass laminare, boats, decks	Concrete, plywood, Masonry Precast
Situclad ECR	Surecote 500 AR & Fibreglass chopped mat.	Reinforcing chem. Resistant epoxy laminare	Reinforcing fiberglass laminare washable. #1 where chemical resistance is required.	Concrete, plywood, Masonry Precast

#2: Most durable



The bars shown are only showing the feature weighting in that product. They are not relevant product to product.

ncpsales@nuplex.com; www.nuplexconstruction.co.nz
0508-882288