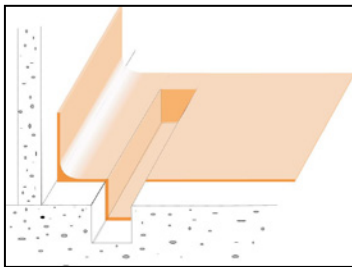


Date Nov 2016
Replaces June 2016

INDUSTRIAL TERRAZZITE Heavy Duty floor Topping

DESCRIPTION: Industrial Terrazzite is an industrial grade floor topping system specifically designed for the food industry. Industrial Terrazzite resin is blended with specially graded silica quartz aggregates to produce a floor system that is hard and durable, Non-slip, resistant to impact, abrasion, thermal shock and chemicals/food acids, yet is non porous, seamless, hygienic and easily cleaned. Industrial Terrazzite is fully bonded to the concrete to prevent water creep.



TYPICAL PHYSICAL PROPERTIES/ FEATURES:

Industrial Terrazzite is a heavy duty monolithic 6mm thick floor topping often with coving.

- Rapid Cure: Full system may be installed within an 8hr period.
- Excellent chemical resistance. See chart.
- Excellent abrasion resistance (6 times that of basalt concrete).
- Excellent impact resistance:
- Excellent adhesion to properly prepared substrates.
- Easily cleaned. See comments at end. Waterblast resistant.
- Excellent slip resistance. Specification is needed of the degree required.
* Note Please read detail within
- Able to be formed into coving, plinths, sumps etc.
- Good resistance to thermal shock. When cured, will perform at all normal in-service . Temperature ranges. ie. Operational Freezers to hot & boiling water applications, as well as steam cleaning.
- Fire Resistant: AS/ISO 9239.1-2003: Non-directional.
2008 Critical Radiant Flux: 6.5Kw/m². Smoke Value: 379 Kw/m²
- Will not support bacteria or fungal growth. Contains STERISHIELD to retard microbial growth. Cleanroom Standard compliant AS/NZS ISO14644.4 2002 (see rear). Approval in 2014. (Documents available). Passes at highest level.
- HACCP approved manufacturing process
- Cured film is non-toxic.
- Free of Bisphenol-A
- Not moisture permeable.
- Moisture absorption: 0.04% as per ASTM D570-63
- Flexural strength: 25Mpa
- Weight per m² @ 6mm thickness: 14 kgs
- Co-efficient of expansion 2.23 x 10⁻⁵/C between 20°C and 60°C when heated at 1°/minutes.
- In-service temperature range (on fully cured) -50c to +90c
- Minimum thickness: 6mm
- Minimum application temperature: +5°C
- Colour: Natural Gold; or other colours dependant on aggregate selection, and the system may be thru-coloured for full thru-colour permanence.

Australia A Division of Nuplex Industries Limited
www.nuplexconstruction.com

New Zealand
Auckland

A Division of Nuplex Industries (NZ) Limited
T: +64 9 5836544 F: +64 9 5253709

This information appearing in this Document (Details) concerning the product which is the subject of the Document (Product), is either based on present technical knowledge and tests done by Nuplex or tests done by, and data supplied from third parties including you, the customer. Since the actual use by you and by others of the Product is beyond the control of Nuplex, no warranty or representation, express or implied is made by Nuplex regarding the suitability for such use, nor does Nuplex accept any liability arising out of the use by you of other products or materials, whether third party or not, that may be referred to in this Document. Nuplex recommends that you carry out your own tests as to the suitability of the Product for your purpose, regarding which you accept full responsibility. In addition, if any of the Details appearing in the Document are based upon tests done by, and/or data supplied by any third party, Nuplex provides no warranties or representations in connection with those Details and you, the customer waives any right you may have against Nuplex in connection with the accuracy, completeness or otherwise of the Details. The information in this Document is not to be construed as absolutely complete or accurate since additional information may be necessary or desirable when particular or exceptional conditions or circumstances exist or because of applicable laws or government regulations affecting use of the Product. Nuplex does not provide any warranty or representation to you that the Product does not infringe the intellectual property rights of any third party. All orders accepted shall be subject to the standard conditions of sale of Nuplex, which are on the back of our invoice. In accepting the Product you, the customer acknowledge and agree:

- The Product is or may be of a hazardous nature and that you, the customer, are responsible for the disposal of the container housing the Product in accordance with the requirements and regulations of the relevant supervising government.
- The Product has a limited shelf life and must be stored strictly in accordance with the guidelines and specifications related to it.
- Where the Details relate to Product tested by Nuplex, those Details are indicative only, regarding which there may be batch-to-batch variation.
- Nuplex gives no warranty or representation as to the applicability for the particular use by you, the customer, of the Product and you the customer shall be responsible for ensuring that the Product is fit for your intended use.
- Nuplex's liability for breach of any term, condition, guarantee or warranty (express or implied and concerning the information in this Document or the Product more generally) including any liability for direct or indirect consequential loss (including indirect loss of profits), is limited to the maximum extent permitted by law and, at Nuplex's election, to either replacing or repairing the goods or paying the cost of replacing or repairing the goods, or in the case of services, supplying the services again.

www.nuplexconstruction.com • ncpsales@nuplex.com • FreePhone: 0508-882288 • FreeFax: 0508553344

- **RECOMMENDED USES:** Meat works, abattoirs, butchery floors, bottling plants, breweries, food and beverage processing plants.
- Freezers, chillers, coolstores
- Dairy factory floors.
- Ablution blocks, kitchens, laundries. Supermarkets: Bakeries, Fish, Meat, deli etc
- Toilets, changing rooms, sports facilities for hard-wearability.
- Floors, walls, upstands, plinths etc where a high degree of chemical, mechanical and slip resistance is of prime importance.

- Food process floors where a high degree of hygiene is required. Approved by regulatory authorities.
- Interior/exterior use. Concrete repair and protection – resurfacing damaged or broken concrete with a more physical and chemical resistant surface.
- Can be applied to new or existing sound concrete, timber or other surfaces.
- Suitable for use in dry or wet situations including ramps.
- Will form coves to any required height or radius.
- Floors above work spaces: Industrial Terrazzite forms a watertight barrier and is compliant with E3 Internal water 3.1.1e. (use full fibreglass laminated floor and Joint safe tape in these situations).

******Note******

Special treatments may be required on some ramps in **wet** situations in order to comply with slip resistance requirements of AS/NZ 3661.1:1993. Specific advice must be sought from Nuplex Industries Ltd, Construction Products Division prior to specifying in this situation. See page 1

LIMITATIONS:

- Application to uncured concrete (minimum recommended cure 28 days). Application to damp surfaces. (Refer to Nuplex Bulletin on application options on wet or uncured concrete).
- Application to unstable or defective substrates without approved remedial treatment prior to installation.
- Application below +5C.
- Application where fumes may contaminate adjacent foodstuffs (refer to Nuplex Supascreed or Nuthane for odour free installations). This only applies in the installation stage (up to 3 hrs after laying).
- Application over existing coatings/toppings – refer to Nuplex.
- Over concrete cure or release agents without Nuplex approval.
- Over ceramic tiles without specific written Nuplex design specification.
- Refer to Nuplex chemical resistance data.
- Cracking in adjacent walls and concrete substrate will likely telegraph through the Industrial Terrazzite.

CHEMICAL RESISTANCE CHART 2009

Test procedure involves total immersion of the polymerized sample in a test medium at 25 Deg C. The sample were observed for chemical attack and hardness throughout the testing period. The results below were taken after 3 weeks exposure:

Test Media	conc.	Industrial Terrazzite
ACIDS		
Hydrochloric Acid	10%	M
Sulphuric Acid	10%	M
	25%	U
Acetic Acid	10%	M
	50%	M
Nitric Acid	10%	M
Citric Acid	10%	M

Lactic Acid	90%	M
Phosphoric Acid	30%	M
ALKALIS		
Potassium Hydroxide	30%	A
Caustic Soda	50%	A
SOLVENTS		
Ethanol		M
Toluene		A
Acetone		D
Isopropanol		U
PETROCHEMICALS		
Kerosene		U
DISINFECTANTS & CLEANERS		
Detergent (DET 18)	100%	U
Bleach (2.5% Sod Hyd Cl)		M
MEKP - M50		A
SALT SOLUTION		
Brine	20%	U
OTHERS		
Sugar Syrup	30%	U
Distilled Water		U

LEGEND

U = Unaffected (i.e. after 3 week exposure the samples have not changed)

M = Marked (Short term exposure, the test media will leave a mark on the sample)

A = Attacked (Short or long term exposure, the mechanical properties will deteriorate)

D = Destroy (Short or long term exposure, damage will occur)

All substrates shall be stable and solid.

Note: The ability of new or existing floors to take the loads as a result of the Nuplex Industrial Terrazite must be checked prior to installing. All control joints junction cracks in the substrate etc are to be properly treated .

Nuplex Industries should be consulted when installing Nuplex Industrial Terrazite on any suspended floor slabs.

SUBSTRATES **Preparation**

CONCRETE

Shall have a surface which has been mechanically trowelled to AS3610:1995 U3/NZ/3114:1987U3 finish or . Then preparation is achieved by captive shot blasting or other coarse abrasive methods. Eg Diamond grinding.

Concrete shall be cured for a minimum of 28 days prior to laying Industrial Terrazite. The moisture content shall be less than 75% RH. (Refer Nuplex Bulletin on application options on wet or uncured concrete).

Plywood or Timber: consult Nuplex for information

Note: If the substrate is an above grade slab and waterproofing is required to comply with NZBC E3, the tank the floor and cove upstands with a layer of 450gsm CSM fibreglass. This will provide a seamless waterproofing layer. Ensure the floor is clean, dry and prepared as above.

Cove tops

Install Nuplex **cove** upper termination metal strips: **5.2mm or 9.2mm rebated strip** are available (see separate details drawings). Use a rebated wall cut (see details) if the coving strip cannot be used.

http://www.nuplexconstruction.com/pdf/Details_resin-floor-toppings.pdf

Install fibreglass CSM cloth in floor wall internal corners.

SUBSTRATES - Falls **and falls to drains**

STZ PREFILL: The falls must be specified pre-tender. Industrial Terrazite is 8-9mm thick and prefill may involve significant extra materials. The quantities of materials required to raise the floor height at wall perimeters is often underestimated. To do this may

involve significant extra costs and should be discussed and agreed. It is a very common for STZ prefill system to be used under Industrial Terrazzite to create falls to drains and other filling applications. Normally for new work falls are laid in the concrete and fall to drains. However in refurbishment the drains and falls are incorrect. Sometimes new drains are installed. The prefills create falls of at least 1: 50 to ensure no ponding water. (1:100 will fall but will have standing water in places). See image latter in the document.

Refer to STZ Prefill document below and the details above.

http://www.nuplexconstruction.com/pdf/stz_prefill.pdf

PREPARATION

APPLICATION:

Prime the properly prepared floor areas with minimum one coat of STZ Primer. Coverage rate and number of coats will vary depending on the porosity of the substrate, Maximum coverage 6m²/litre/coat. STZ Primer and STZ Hardener are to be thoroughly mixed in the correct proportions (1-3% on STZ Primer weight).

Wait until STZ Primer has gelled/set before overcoating.

Nuplex Industrial Terrazzite must be applied in such a manner to achieve a minimum 8mm thickness. Use screed box, bars or install angle strips as a guide. Accurately weigh and power mix until homogeneous Nuplex Industrial Terrazzite Resin and STZ Hardener in the correct proportions:

	Approximate M ² coverage
Nuplex Industrial Terrazzite Resin @ 6mm	2.0 kgs (118m ² per 225kg drum)
Nuplex STZ Hardener (on Industrial Terrazzite Resin weight).	1.5 – 2.5%

Add selected Nuplex Blended Sand at the ratio:	
Nuplex STZ Floor Sand	12kgs

Note: Maximum Industrial Terrazzite Resin:Filler (sand) ratio 1:6 parts by weight Resin, Hardener and Sand are to be blended in an efficient mixer to ensure all ingredients are homogeneously blended.

Apply Nuplex Industrial Terrazzite flooring to correctly prepared and sealed substrate using a spreader box and/or a suitable glass, steel trowels, power float etc. Ensure the matrix is well compacted and free of ridges or unevenness. Successive mixes must be homogeneously blended together into wet Nuplex Industrial Terrazzite mixes. Access to repair wet floor areas during installation can be achieved using crampons or special spiked shoes. Adequate lighting is to be provided to ensure defective surface finishing can be easily identified and corrected during the installation process. Lubricate tools and equipment used during the installation with sparing quantities of Styrene Monomer. Use Acetone only to clean tools and equipment.

NON-SLIP floor definitions: The contractor shall ensure that the surface finish, in all zones , is agreed with the client and samples supplied and agreed.

Nuplex Rating	Description	Examples
NR1	Smooth –steel trowel floated. CF 0.46	Dry areas, completely homogeneous floor. Bakery
NR2	Non-slip & Hardwearing – glass float. CF 0.56	Light-Wet areas, completely homogeneous floor. Heavy duty bakery.
NR3.A	Medium duty non-slip – glass float finish and the 18/36 non-slip aggregate is broadcast into the wet surface. Apply a Medium Sprinkle with areas of no non-slip. Follow this with roller applied topcoat. This gives a good combination of Non-slip and cleanability. CF 0.73	Continually Wet areas with nonslip required. eg Light duty Meat, fish. Wet area Bakery.
NR3.B	Heavy duty non-slip – glass float and the 18/36 non-slip aggregate is broadcast into the wet surface. This is a full spread applied heavily. Follow this with roller applied topcoat.	Heavy duty Butchery, abattoirs

NR4	Very sharp non-slip: glass float and is broadcast with 18/36 mixed 50/50 with Silicon carbide non-slip aggregate into the wet surface. Follow this with roller applied topcoat.	Heavy duty processing with extra slip hazards.
NR5	Specialised very heavy duty nonslip. Refer to a Nuplex specification.	

NB

1. The aggregates must be broadcast into the wet Industrial Terrazzite body coat; not into topcoat.
2. Ensure the contractor supplies info on the above non-slip ratings and provides a cured sample showing the surface finish.

Ensure all finished edges of the Nuplex Industrial Terrazzite are supported to avoid damage. Nuplex Industrial Terrazzite may be applied to skirtings, coves and upstands if required with the use of Nuplex STZ Coving Resin and specially formed trowels.

Optional coves and skirtings can be completed as the main floor is installed however they are best installed following installation of the floor. Floors must be protected during cove/skirting installation.

Topcoat: Once finished and hardened apply 1 coat of Nuplex STZ Topcoat at a spread rate no greater than 6m²/litre/coat. Topcoat must be applied only to clean and dry surfaces. Sometimes two thin coats of STZ topcoat give a better looking result.

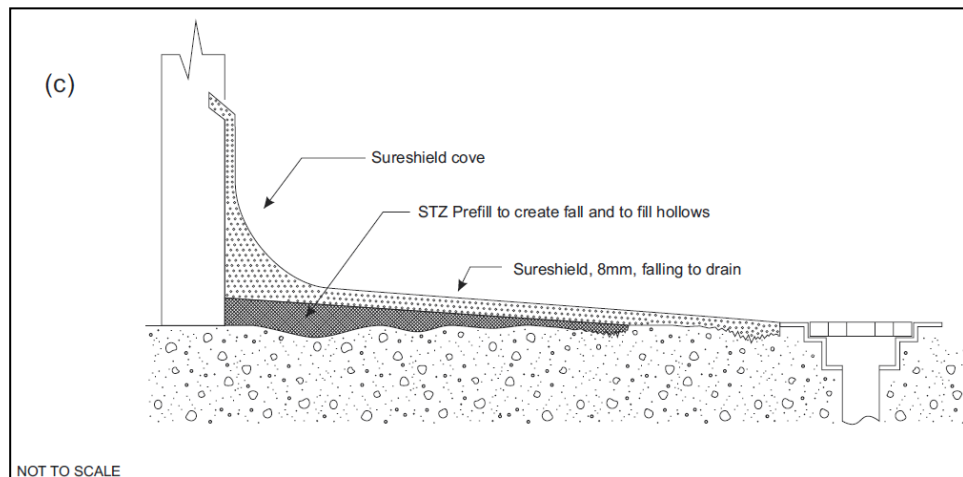
Optional: For greater Chemical resistance use Surechem VE topcoat (vinyl Ester resin) applied at 3m²/lt in place of the STZ topcoat

Joints: All concrete control and construction joints should be carried through the Industrial Terrazzite using C81 for movement joints and K130 Epoxy Gold for control joints. Use k130 for larger joints.

Colour options: Industrial Terrazzite may be:

1. Natural. This is a gold / natural colour. Clear resin where the ochre colours of the aggregates are seen. This is a durable option with least appearance change over time.
2. Fully Tinted: The resin is fully coloured with tinters. The floor takes on a solid colour effect. Often Grey, Dark Grey, Black, Red etc. see colour chart online.
3. Coloured chip aggregates (sometimes called Decorative Terrazzite)
Colour granules are added in different quantities (concentrations) into clear resin.

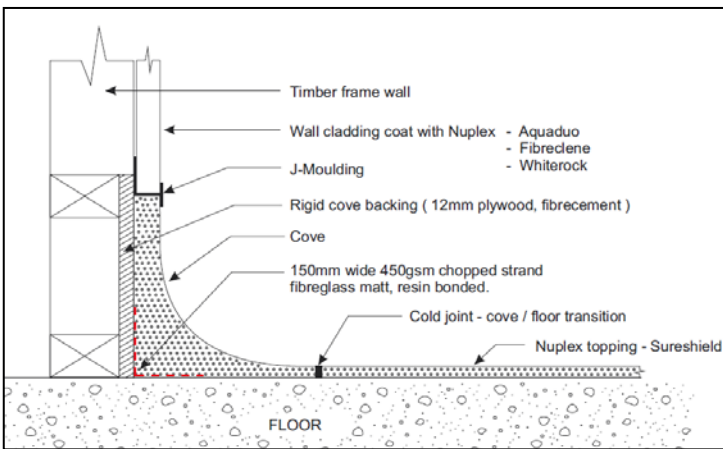
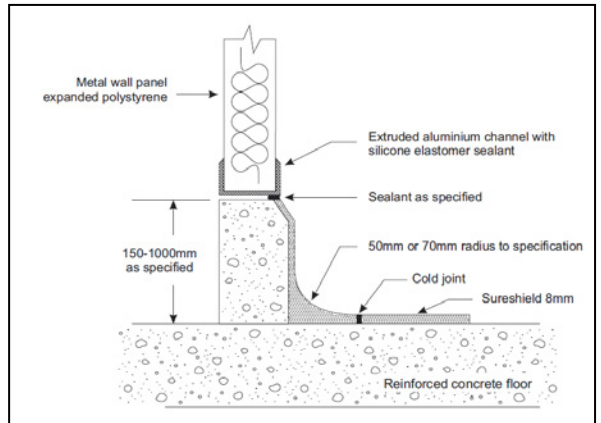
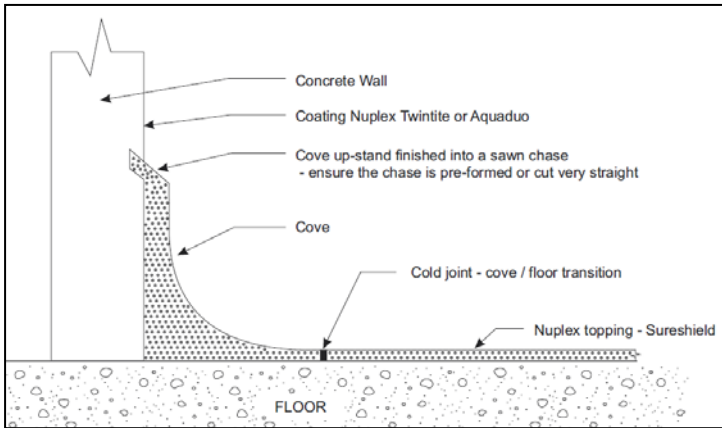
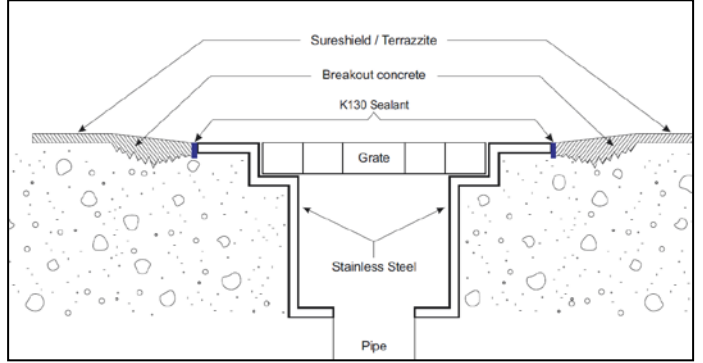
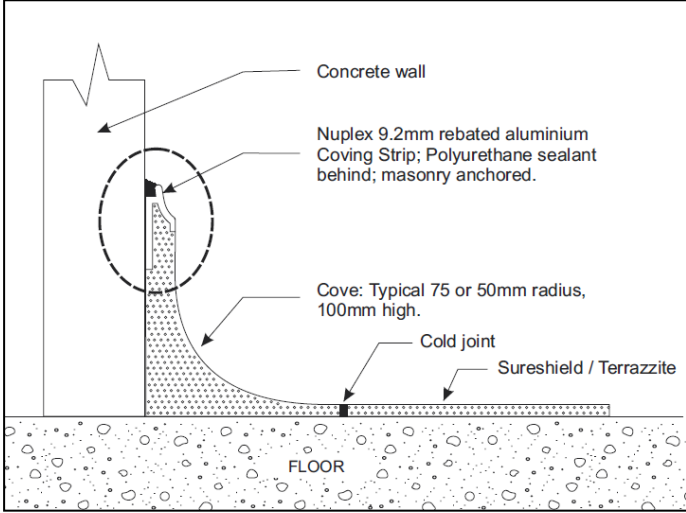
Use of STZ Prefill to ensure falls are correct



Sample details

For more details see the website: resin floors / industrial toppings / " details- Industrial floors" for more options.

http://www.nuplexconstruction.com/pdf/Details_resin-floor-toppings.pdf



INDUSTRIAL TERRAZZITE

QUALITY ASSURANCE:

A log shall be kept by the licensed Nuplex Industrial Terrazzite contractor and made available to Nuplex Industries Ltd at their request. Information to be recorded daily is:

1. Material batch numbers used.
2. Sequence of mixing, ratios and quantities and formula.
3. Substrate moisture content.
4. Substrate temperature.
5. Ambient temperature.
6. Ambient relative humidity.

THINNING cleanup:

Do not thin. Lubricate tools with styrene monomer (mixer and barrows). Cleanup with acetone.

CURE AND DRY TIMES:

(25°C 50% RH)

Workable pot life:	20-30 minutes
Hard Dry:	3 hours
Light foot traffic:	3 hours
Recoat:	within 24 hours
Full Use:	4 hours

HEALTH & SAFETY:

- Overalls are recommended when using this product. Wear gloves if this suits the user as the material will bond strongly to skin. It has not been found to be dermatitis causing.
- Fumes may be cloying in enclosed areas. The use of fans to provide positive forced air draft and/ or extraction is recommended. The levels of fumes have been shown to be well below recommended levels. See our data on emissions on our web bulletin board. Flammable 3C. Control and manage area of work and all PPE gear.

SHELF LIFE:

6 months in unopened containers. After this period suitability for use should be checked in consultation with Nuplex Industries Ltd. Industrial Terrazzite is provided in both winter & Summer cure rates.

Complementary Materials:

- Fibreclene smooth wall lining material to meet Industrial Terrazzite above coving.
- Nuplex coving strips to form cove top termination.
- Surechem VE Topcoat to provide increased chemical resistance.
- Nuplex coloured aggregates and colorants to provide alternatively coloured floors.

Maintenance and Cleaning

Resurfacing: Nuplex recommend two options: Re-aggregating with Traxite VE which is a high durability and chemically resistant finish. It offers very good adhesion to the prepared older surface. A second option is Nuthane topcoat which offers a monolithic and non-slip coloured finish with no odours.

Repairs can be undertaken with further new Industrial Terrazzite applied directly or use Supascreed repair system.

Cleaning: A Industrial Terrazzite floor is cleaned with stiff bristled brushes and detergents. The stiff bristle brushes and commercial detergents will remove dirt from the non-slip surface that a soft mop will not. The waxed nature of our topcoating system may attract dirt during the early life of the product. Pay careful attention to cleaning at this stage. Refer to the Cleaning document on our website.

Producer Statement

Nuplex Industries Ltd state that Industrial Terrazzite is compliant with E3 (internal water) and D1 (Access routes / slip resistance wet & dry). Complies with CLEANROOM and controlled environment AS/NZS ISO 14644.4: 2002 section E.2.1.4 Floors. That the floor shall be non-porous, slip resistant, abrasion resistant, and resistant to chemicals. They shall support static and dynamic loads.



How to select Nuplex Floor toppings

August 2015

High performance Resin Flooring Choice Guide



Nuplex manufacture in NZ a range of rein floorings. Some are more suitable than others depending on the installation parameters and the performance required within its applied environment.

	Original Construction	Internal work or reconfiguration. Isolated environment	Internal work or reconfiguration. Sensitive or Exposed Public area
General small commercial kitchen	Industrial Terrazzite *2	Industrial Terrazzite	Industrial Terrazzite ZV, Supascreed or Nuthane
Supermarket - Deli	Industrial Terrazzite	Industrial Terrazzite	Industrial Terrazzite ZV, Supascreed or Nuthane
Supermarket - Fish	Industrial Terrazzite	Industrial Terrazzite	Industrial Terrazzite ZV, Supascreed or Nuthane
Supermarket - Butchery	Industrial Terrazzite	Industrial Terrazzite	Industrial Terrazzite ZV, Supascreed or Nuthane
Supermarket - Bakery	Industrial Terrazzite	Industrial Terrazzite	Industrial Terrazzite ZV or Nuthane
Laundry	Industrial Terrazzite	Industrial Terrazzite	Industrial Terrazzite ZV, Supascreed or Nuthane
Hot cook – heat, oils fats	Industrial Terrazzite	Industrial Terrazzite	Industrial Terrazzite ZV or Nuthane
High impact processing	Industrial Terrazzite	Industrial Terrazzite	Industrial Terrazzite ZV, Supascreed or Nuthane

* Protect area to enable use of this system for maximum durability.

*2 Industrial Terrazzite and Industrial Terrazzite are interchangeable.

Trowel-on systems such as Industrial Terrazzite offer:

- One-pass rapid installed flooring
- Integrated floors, coves, drains, nibs and upstands
- Carefully managed falls to drains to help prevent ponding water
- Highest impact and abrasion resistance combined with high heat and chemical resistance
- Best value for money on a dollars per mm thickness basis

