

Circ, cn

17 April 2014

Nuplex Surface Preparation

The road to successful flooring starts with successful floor preparation.

The aim of floor preparation is to remove substrate contamination, remove previous coatings, remove the laitance layer of concrete and to provide a substrate that is clean, dust and debris free and of specific importance in all cases provide the correct surface profile for the system being applied

Contractors should be aware of the various methods of preparation available, choosing the correct method utilising the correct machinery thereby enabling cost effective, efficient successful floor preparation.

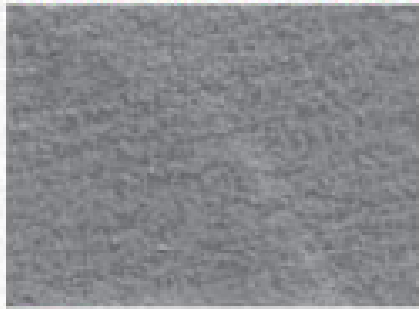
Methods of Preparation

- 1) Captive Shot Blasting
- 2) Vacuum Enclosed Diamond Grinding
- 3) Mechanical Scabbling / Planning
- 4) Impact Hammering
- 5) Acid Etching

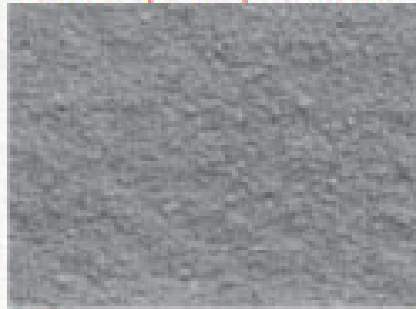
For generic use the International Concrete Repair Institute (ICRI) has created a guideline, "Selecting and Specifying Concrete Surface Preparation for Sealers, Coatings, and Floor Topping Overlays." It provides concrete surface profiles (CSP) that can be used under the following conditions:

- Acid etching CSP 1 - Application of penetrating sealers only
 - **Crystal Seal, Diamond Seal**
- Grinding Polishing CSP 2 - Application surface seals
 - **Revathane, Aquaclear**
- Light Shot Blast CSP 3: coating applications under 1mm DFT
 - **Terratuff, Terraflake, Situclad, Situclad VE GF**
- Medium Shot Blast CSP 4 or 5: coating applications 1mm - 4mm DFT
 - **Surecote System 200, Traxite, Nuthane MD, Terratuff SLE, Intafloor ZV**
- Medium-Heavy Shot Blast CSP 5 or 6: slurry & broadcast applications 3mm+ DFT
 - **Nuthane SB, Sureshield SB, Supascreed SB**
- Heavy Shot Blast CSP 7 or 8: screed topping applications 6mm+ DFT
 - **Sureshield, Decorative Terrazzite, Supascreed, Nuthane T, Architectural Terrazzite, Surechem VE**
- Extreme Shot Blast (CSP 9): screed / prefill overlays

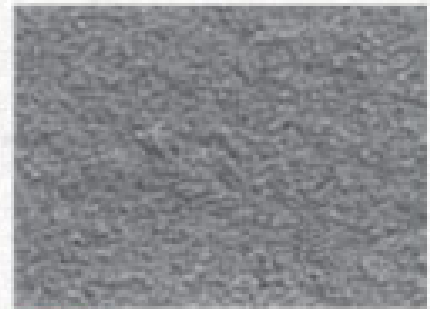
International Concrete Repair Institute (ICRI) Concrete Surface Profile (CSP) Scale



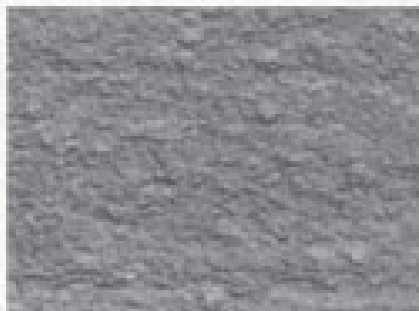
CSP 1
(acid etched)



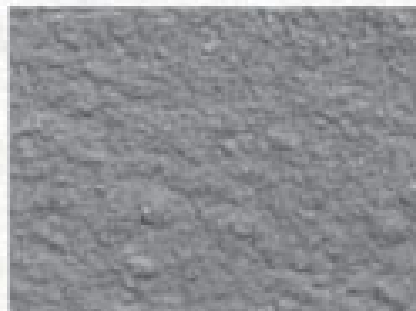
CSP 2
(grinding)



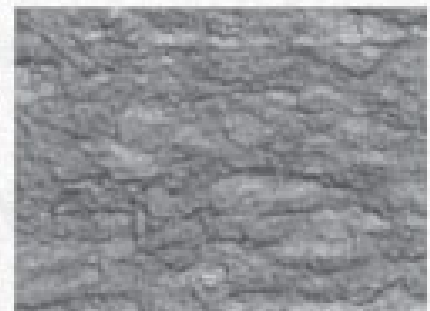
CSP 3
(light shotblast)



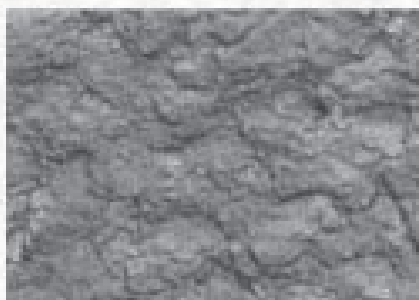
CSP 4
(medium shotblast)



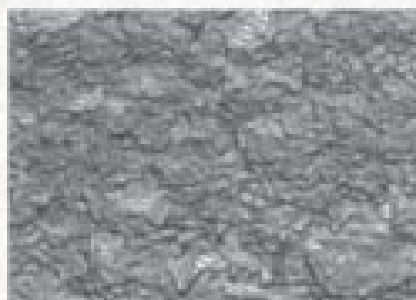
CSP 5
(medium-heavy shotblast)



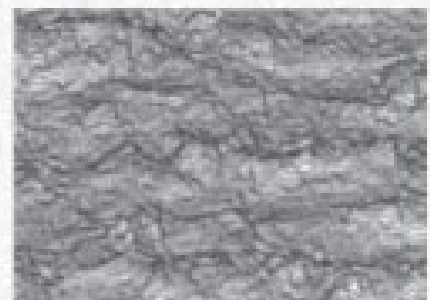
CSP 6
(heavy shotblast)



CSP 7
(heavy shotblast)



CSP 8*
(extreme shotblast)



CSP 9*
(extreme shotblast)

Floor preparation equipment is available via Nuplex Construction Products seek advice from your local representative.

I trust this information is of use, for further system specific specifications or the latest technical data please visit www.nuplexconstruction.co.nz or do not hesitate to contact us directly www.ncpsales@nuplex.co.nz

Yours Sincerely

Colin Nolan

Market Manager Resin Flooring,

Telephone : +64 3 366 6802

Mobile: +64 21 320 202

Email: colin.nolan@nuplex.com