

Date June 2016
Replaces May 2012

Formwall Hygienic Ceilings

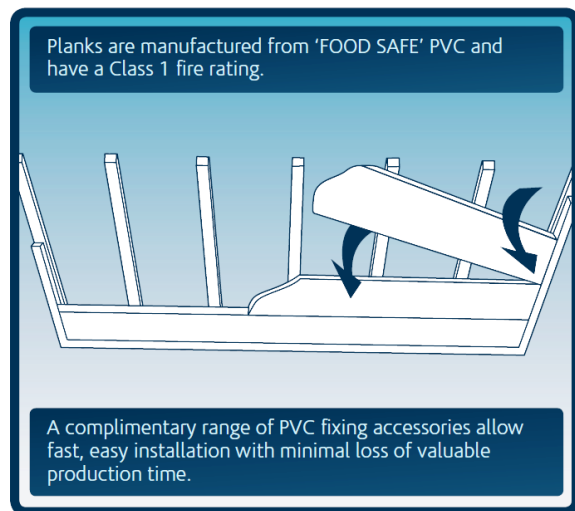
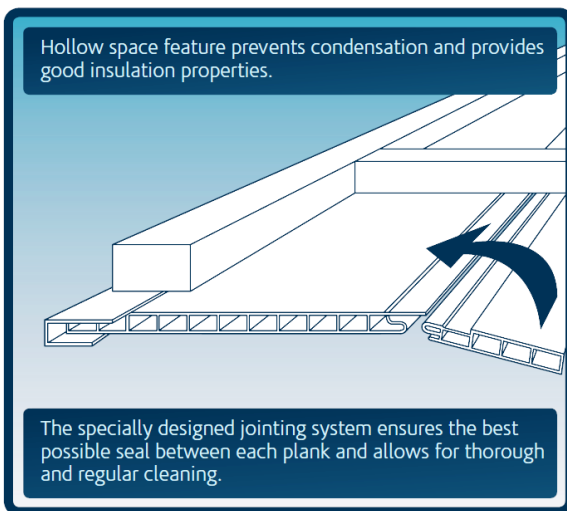
Light Weight Tongue & Groove PVC ceiling panels.
Integrating Hygienic and Durable ceilings, walling and floors.

Use combinations of various Nuplex systems

Ceiling	Wall	Floor
Formwall Ceiling	Formwall White	Nuplex CPS Safety floors Non –slip vinyl
	Formwall Pastels and Vivid Colours	Sureshield Resin based Floor topping
	Nuplex Fibreclene Resin based Fibreglass wall lining	Nuplex Durafloor Plus and Efina smooth vinyl flooring

DESCRIPTION

Formwall Ceiling is an Interlocking PVC Tongue and Groove plank system providing a flush fitting smooth, maintenance free finish for ceilings specifically designed for the healthcare, hospitality, food and process industries.



TYPICAL FEATURES & BENEFITS

- Formwall ceiling is a 10mm x 250mm PVC panel available in 3m, 4m, 5m lengths.
- Direct fixed to the existing ceiling or suspended.
- It integrates with Nuplex Flooring vinyl, resin floors and Walling systems.
- **Lightweight** panels in white, excellent colour fastness.
- Hollow space feature prevents condensation and provides good insulation properties.

- Easy to clean, can be hosed down in situ.
- Impervious and chemical resistant.
- Rigid and durable.



PERFORMANCE DATA – Formwall PVC ceiling panel

- Very high chemical resistance to: Acids, alkalis, staining materials, Hypochlorite, food acids, blood.
- Planks are manufactured from “FOOD SAFE” PVC and have a Class 1 fire rating
- Classification of reaction to fire: BS476,part 7 Class 1,bs476,part 6 Class 0
- Fast and easy installation with minimal loss of valuable production time.
- The specifically designed tongue and groove jointing system ensures the best possible seal between each plank and allows for thorough and regular cleaning.
- Enhances appearance of production areas as well as increasing hygiene levels.
- Colours: White
- Experienced contractors available.

RECOMMENDED USES:

- Freezing works, abattoirs, meat, small goods, fish and food processing plants, butcheries, bottling plants, breweries.
- Cosmetic & Pharmaceutical & food and beverage processing plants.
- Dairy factories.
- Ablution blocks, kitchens, laundries, supermarkets.
- Fast food.
- Hospitality
- Healthcare
- Ceilings where a high degree of performance resistance is of prime importance.
- Food process ceilings where a high degree of hygiene is required. Approved by regulatory authorities.
- Interior use.
- Can be applied to existing ceilings or suspended.
- Substrates such as concrete, timber, steel or plaster finishes.
- Suitable for use in dry or wet situations .

LIMITATIONS:

- It should be emphasised that success in this application is fully attributable to ceiling and room design.
- Application to unstable or defective substrates without approved remedial treatment prior to installation.
- Maximum in service temperature of 60°C.

WARRANTY:

- Formwall is warranted for 10 years for durability. See warranty form.

INSTALLATION:

- Refer Nuplex installation instructions.
- Prepare ceiling surfaces, must be sound and generally level.
- Direct fixed system, a framework of PVC battens fastened to the existing ceiling substrate, Ceiling panels then staple fixed to the battens.
- Suspended system, a framework of PVC battens suspended from purlins, Ceiling panels then staple fixed to the battens.
- If installing as a suspended system ensure the substrate is of adequate strength to support mechanical fixings.
- Pre-condition the panels for up to 24 hours to attain the ambient room temperature prior to the installation.
- Install at the same ambient “in service temperature” at which the area will be used when commissioned.
- On completion of the installation clean all surfaces down with Formwall Antistatic Solution (BLX80905). This is required as the panels may have static build up and any dust in the atmosphere will adhere to the surface of the panel.

APPLICATION:

IMPORTANT: Use approved contractors with teams that have the skills, capability and experience to undertake the contract, size, time schedule and complexity in question.

QUALITY ASSURANCE: A log shall be kept by the licensed contractor. Information to be recorded daily is:

1. Material batch numbers used.
2. Ambient temperature / Ambient relative humidity.
3. Daily detail of contractors.

MAINTENANCE:

Regular cleaning



FEATURES & BENEFITS - FORMWALL CEILING

FEATURE	BENEFIT	PERFORMANCE CRITERIA
Smooth PVC	Easy to clean	Hygienic
Dense PVC	1. Non-porous 2. Non absorbent	Easy to clean
High quality PVC	No fillers to degrade	Gives chemical resistance
High quality PVC	Low spread of flame	Meets fire regulations
T&G PVC plank	Tight joint system	Can be pressure washed
T&G PVC plank	Quick to fix	Minimum downtime
Twin wall construction	Provides thermal break	1. Reduces condensation 2. Reduces heat loss
Xkgs per m2	Reduces loading on ceiling structure	Light-weight
Mechanical fix method	1. Fix to new & existing grid 2. Fix to any substrate	1. Low cost suspended system 2. Easy to install
Twin wall construction	Easy to cut and shape	1. Provides access and flush light apertures 2. Bespoke system
White finished plank	Good light reflection	Clean, bright appearance
Variable length planks	Minimum wastage	Low cost system
Smooth dense surface	Almost maintenance free	Low cost maintenance
Impervious surface	Can be hosed down	Easy to maintain
UV stable	Will not dis-colour	Maintains appearance
Dense PVC	Inert	Hygienic
High quality PVC	Low spread of flame AS NZS 3837 1998	Meets the requirement of the NZBC

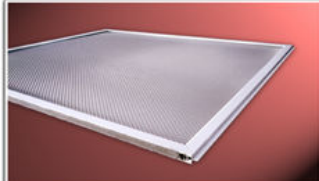
Formwall Hygienic Wall Cladding & Ceiling Panel Installation



Formwall PVC Ceiling Panels

Ceiling Diffusers

	<p>C12 C12 is the standard sheet for Recessed Troffer style luminaries.</p>		<p>SD Frame Stylish Recessed Troffer frame with unique hinging system that allows easy access for lamp replacement.</p>
	<p>C15 Distinctive pattern consisting of uniform array of 9.6mm square base, female conical prisms with diagonal prism design.</p>		<p>Clean Room frame Completely sealed unit ideal for hygiene applications</p>
	<p>C19 Prismatic pattern consisting of uniform array of 4.5mm square base, male conical prisms with parallel and perpendicular design.</p>		



SD FRAMES


TRANSFORM WITH SD FRAME

- Cost Effective
- Retro fit
- Easy Installation

FEATURES


- Light stop insert ensures no light leakage.
- Pins allow frame to hinge down allowing easy access for lamp maintenance.
- White powder coated aluminium frame - won't crack or degrade.

FITS 2 WAY T RAILS



C12 Clear Prismatic (other diffuser options also available)

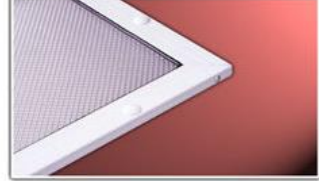
NO LIGHT LEAKAGE



Enhance Fixture Appearance

Standard Sizes
Imperial or Custom sizes also available:

- 2x1
- 2x2
- 4x1
- 4x2
- 5x1



CLEAN ROOM FRAME

CLEANABLE SEALABLE

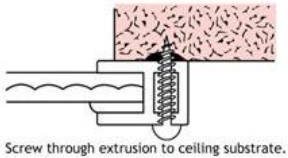
APPLICATIONS

- HOSPITALS
- DAIRY & FOOD PROCESSING PLANTS

FEATURES

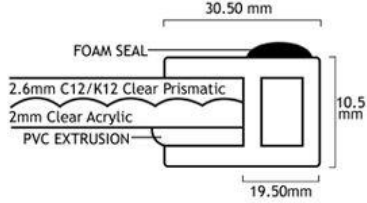
- Cleanable surface
- Robust construction

INSTALLATION:



Screw through extrusion to ceiling substrate.

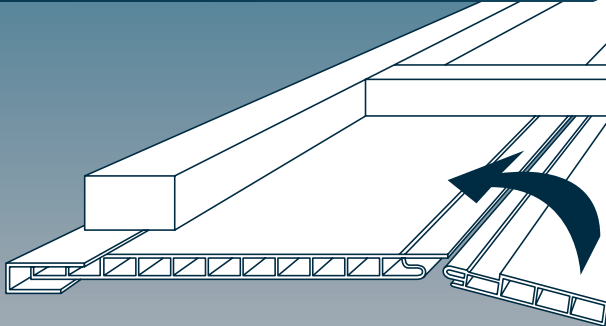
Custom made to your dimensions



Standard Colours:

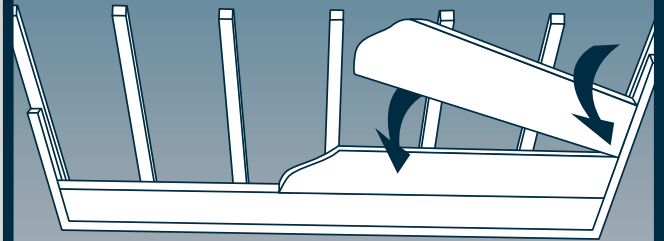
- Mill Run
- Powdercoated Arctic White
- Custom Colours available upon request

Hollow space feature prevents condensation and provides good insulation properties.



The specially designed jointing system ensures the best possible seal between each plank and allows for thorough and regular cleaning.

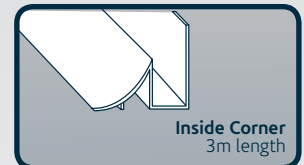
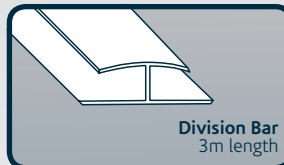
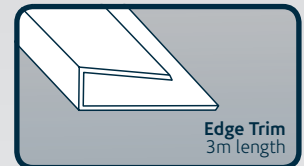
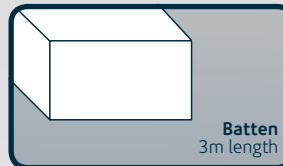
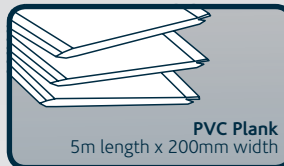
Planks are manufactured from 'FOOD SAFE' PVC and have a Class 1 fire rating.



A complimentary range of PVC fixing accessories allow fast, easy installation with minimal loss of valuable production time.

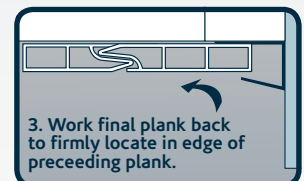
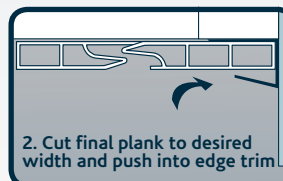
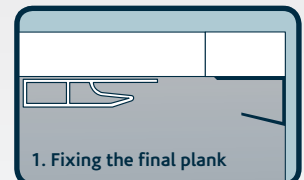
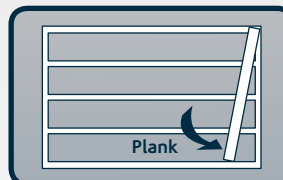
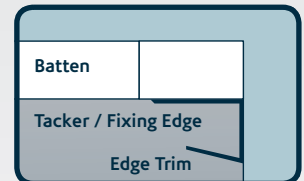
Six easy to work components

- Enhances appearance of production areas as well as increasing hygiene levels
- Satisfies all current food safety legislation
- Temperature range -30°C to +80°C
- Available in White, Beige and Cream



Four simple procedures to install

- 1 A framework of PVC battens must first be fastened to the existing ceiling or suspended from purlins at 40-60cm intervals. Battens must also be run around the perimeter of the ceiling area. NB Battens must run at right angles to the desired direction of your ceiling planks.
- 2 Using 12mm - 14mm stainless steel staples, fix the edge trim around the perimeter batten as close as possible to the walls. Calculate the length of plank required by measuring from edge trim on wall (A) to edge trim on wall (B).
- 3 Deduct 2cm from this length and cut your plank to this size. Insert plank with the tongue into edge trim and push into position. Now staple plank into place at each batten by fastening through the planks fixing edge.
- 4 Once the first plank is in place, simply push the remaining planks into the groove of the preceding plank and staple into position as before. Before installing final plank, ensure you trim the plank to the desired width, then work into the edge trim with a pallet knife.



Advanced Hygienic Contracting reserve the right to change any product specification, design or description without prior notice. No responsibility or liability can be accepted for any loss or damage arising from any error or omission contained in this document.