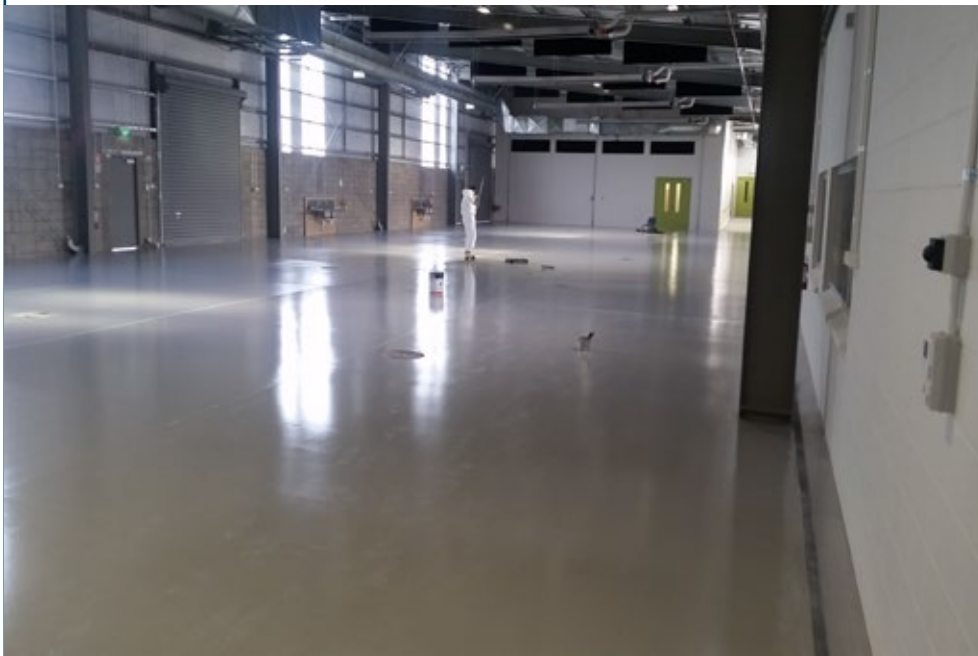


# Case History NCP

Industry Sector

Warehouse Flooring



Project Name: Christchurch  
Information Technology Block

### Nuplex Terratuff N35 Light Grey

A brighter, cleaner, grey for industrial concrete floors.

Terratuff light Grey (N35) is a very cost effective, durable, easy to apply two pack epoxy.

**System:** Terratuff

|             |                    |
|-------------|--------------------|
| Size:       | 2000m <sup>2</sup> |
| Contractor: | Conprep            |
| Completed:  | July 2015          |

## Warehouse Floor Joint Repairs

Spalled, broken or damaged concrete floor joints can be a major health and safety issue for warehouse personnel causing trips and slips. They are also a major cost concern for warehouse managers leading to increase fork truck maintenance. Another un-seen cost to business is the reduced speed with which fork trucks can operate on uneven surfaces and the damages caused to palette goods with bounced across broken joints.

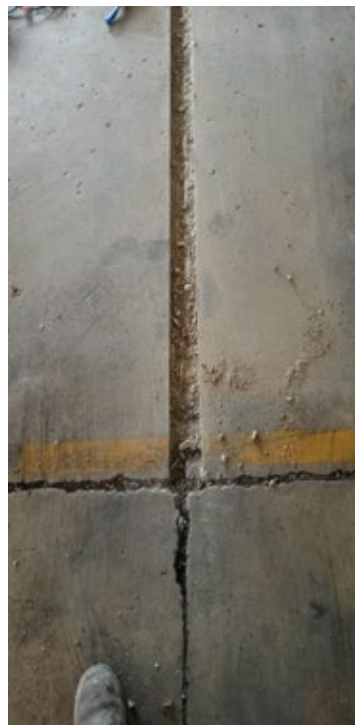
### Solution

Re cut and re-build the joint aris with high strength, very durable Nuplex Supascreed a 3 part epoxy screed system.

**System:** Supascreed

**Contractor:** HS Group

**Completed:** July 2015



Before



After

**For further information on our range of solutions**

[www.nuplexconstruction.co.nz](http://www.nuplexconstruction.co.nz)