

## Commercial Vinyl Flooring

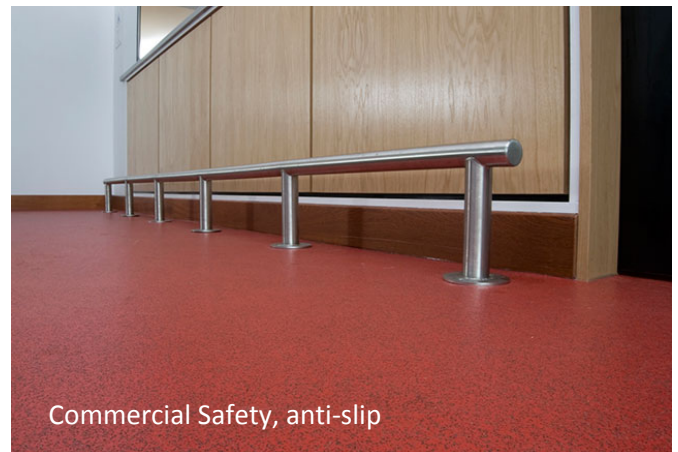
- Durafloor homogeneous commercial flooring
- Efina Non-directional chip effect Homogeneous
- Nuplex Safety floor R10

All 20 Lm rolls: 20m x 2m x 2mm

Weld Rod to match

Floor prep: Durabond, Supaset Rapid,  
Ultrafinish feather finish,  
MT510 self leveller

Adhesive : Supatack T9 Long tack VOC free  
Duracryl & VA1  
Supacryl & HSV



DURAFLOOR



**Champagne**      **2018**



**Rust**      **2014**



**Cocoa**      **2019**



**Dolphin**      **2002**



**Charcoal**      **2023**



**Bermuda**      **2011**



**Pitch**      **2024**

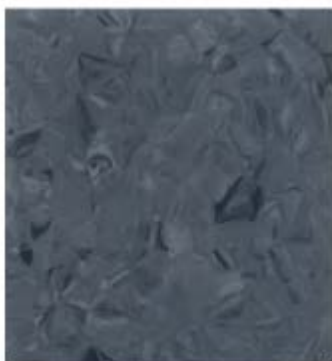
EFINA



**Glacier 7317**



**Azure 7302**



**Jet 7323**



**Granite 7321**



**Cappuccino 7319**



**Chamois 7318**



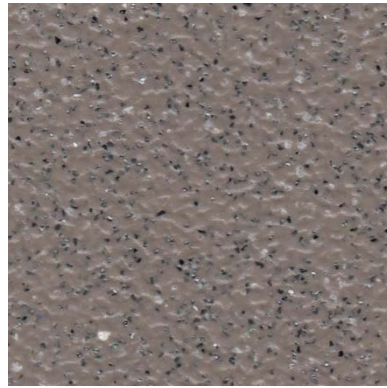
**Fire Brick 7316**



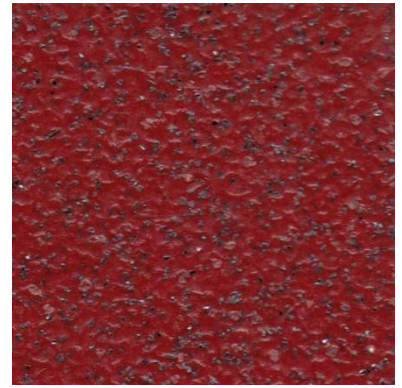
# Safety Vinyl R10



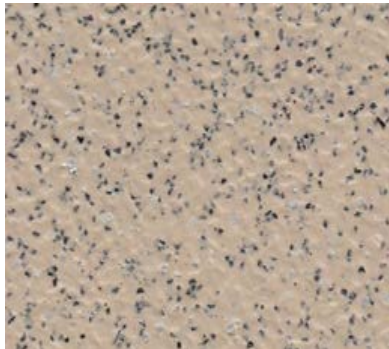
**005 SKYLINE**



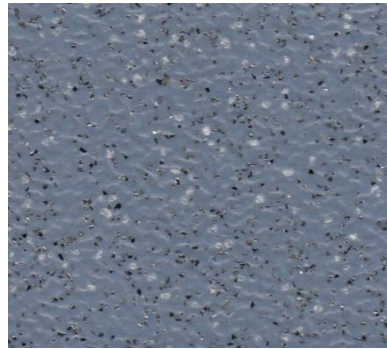
**032 TUNDRA**



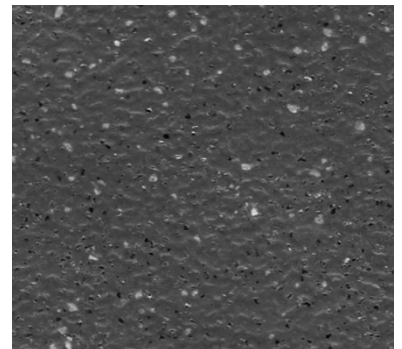
**021 BEECH**



**230 BONE**



**022 BLUE**



**023 MIDNIGHT**



**011 FOG**



**009 BLACK**

These are representative samples. For technical reasons shade and colour matching may vary.

**Free Phone: 0508-882-288**

**Email: [ncpsales@nuplex.com](mailto:ncpsales@nuplex.com)**

**Free Fax: 0508-553-344**

**[www.nuplexconstruction.com](http://www.nuplexconstruction.com)**